

Tigra

38m Luxury Sailing Yacht

E-brochure



Tigra

Sailing View



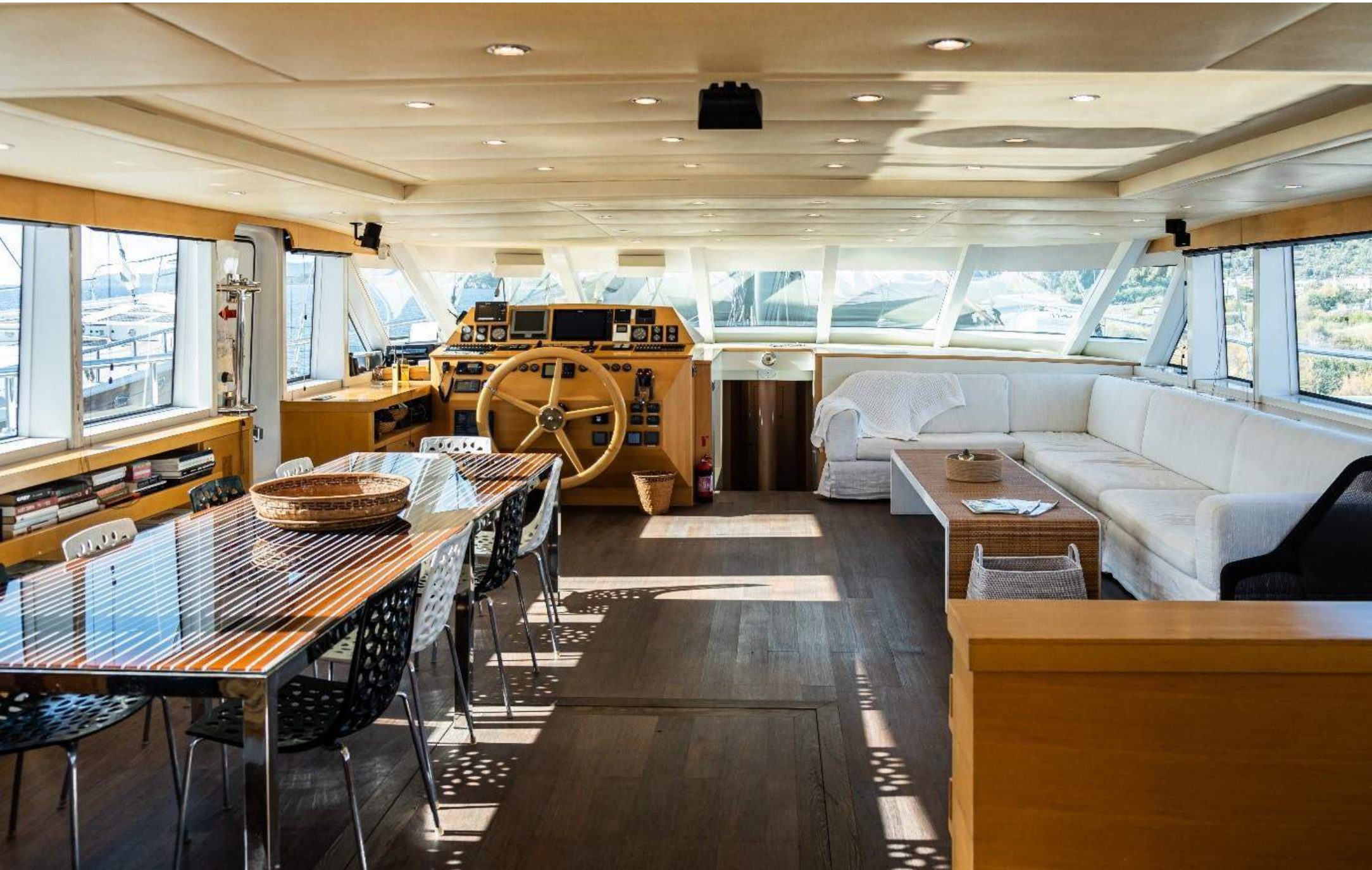
Tigra

Fore Deck



Tigra

Saloon



Tigra

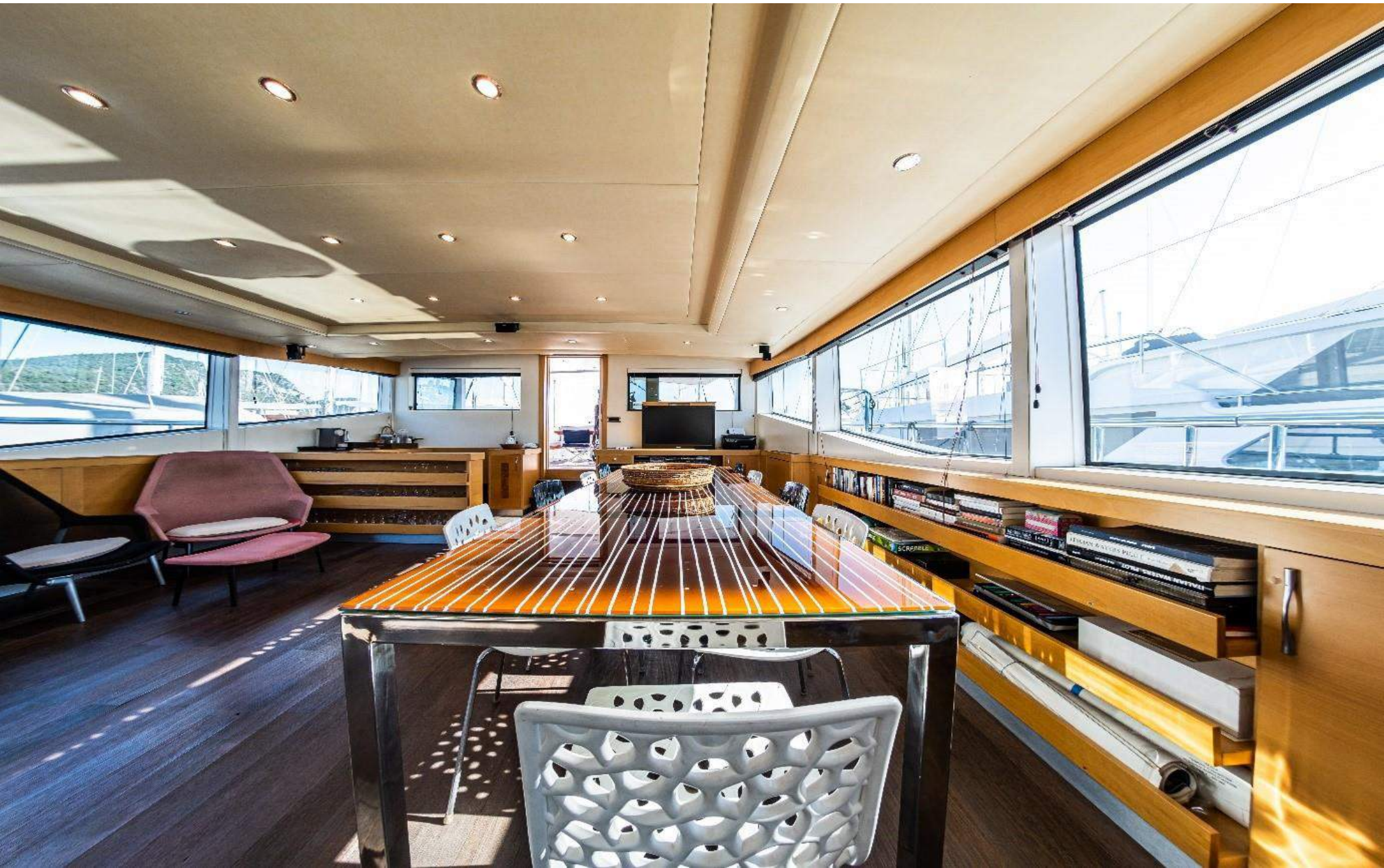
Saloon



Tigra

Saloon











Tigra

Master Suite Bathroom





Tigra

Forward Master Cabin





Tigra

Twin Cabin





Tigra

38m Luxury Sailing Yacht

Main Characteristics

Type: Sailing Yacht- Motorsailer/Ketch
Length: 38.00m
Beam: 8.20m
Draft: 3.80m
Built / Refit: 2008 / 2020
Builder: Mastori Yachts – Bodrum
Hull: Steel
Engines: 2 x 440HP MAN
Cruising / Max. speed: 10 knots / 13 knots
Generators: 2 x 33Kw Kohler
Crew: 5
Homeport: Bodrum

Accommodation

10 guests in 5 cabins
1 Master suite, 1 Master cabin, 2 Double cabins, 1 Twin cabin

Key Features

Ken Freivokh Design
Modern and stylish interior
Comfortable and spacious guest cabins
Large deck space
Great sailing performance
Professional and friendly crew service

Entertainment

Wi-fi internet
Satellite TV
LCD TVs and DVDs
Hi-fi sound system
Board games

Tender

1 x 4.60m rib tender with outboard 70HP

Water Toys

Water-skis
Donut / Ringo
Stand-up Paddleboard
Fishing & Snorkeling gear



DISCLAIMER: This document is not contractual. All specifications are given in good faith and offered for informational purposes only. The publisher and company do not warrant or assume any legal liability or responsibility for the accuracy, completeness, or usefulness of any information and/or images displayed. Yacht inventory and specifications are subject to change without prior notice. None of the text and/or images used in this brochure may be reproduced without written consent from the publisher.

